



SIMPLE LIFE



STONEFIELD  
EDGE

WOLVERHAMPTON  
WV14 0RT

# CONTENTS

LOCAL INFORMATION .....	4
LOCATION MAP.....	5
SITE MAP.....	6
PROPERTY INFORMATION	
– IRWELL - 2 BEDROOM HOME .....	8
– ELLESMERE - 3 BEDROOM HOME .....	10
– ELLESMERE UP - 3 BEDROOM HOME .....	12
– GRANTHAM - 3 BEDROOM HOME.....	14
– TRENT - 3 BEDROOM HOME.....	16
– WEAVER - 3 BEDROOM HOME.....	18
– WEAVER UP - 3 BEDROOM HOME .....	20
– DEE - 4 BEDROOM HOME .....	22
– ROWAN - 2 BEDROOM APARTMENT .....	24
– ALDER - 2 BEDROOM APARTMENT .....	26
TESTIMONIALS .....	28
RESIDENT FEES.....	29
COMMUNITY ENGAGEMENT.....	30
ABOUT US .....	30
OUR SPEC .....	31



# STONEFIELD EDGE

STONEFIELD EDGE IS A BRAND NEW VILLAGE JUST 2.5 MILES SOUTH EAST OF WOLVERHAMPTON CITY CENTRE, FEATURING 123 STUNNING HOMES TO RENT.



## LOCATION INFORMATION

The market town of Bilston benefits from a range of shops including a Morrisons, Lidl and Argos, as well as the Springvale Way Retail Park. The pedestrianised area gives you convenient access to high street shops and the 150 market stalls set up 4 times a week.

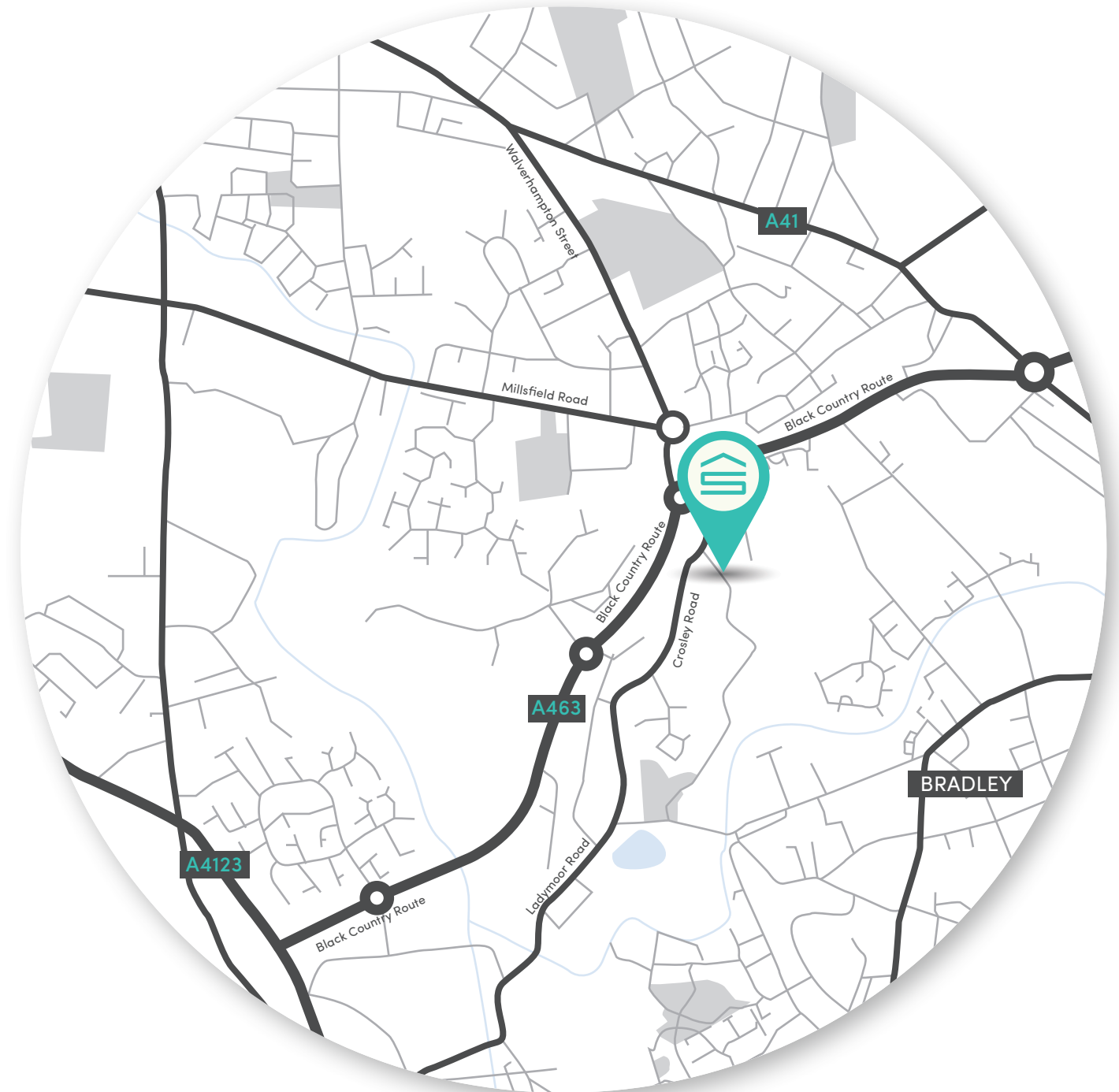
For families with children, your education needs are well met with Stonefield Edge being within the admission area of 58 Good and Outstanding rated primary schools including Bilston C of E Primary School.

If you ever need to travel further afield, Wolverhampton train station is 2.5 miles from the development, whilst by car you can access the M6 within 3 miles providing easy access to the North West as well as further south to Birmingham.

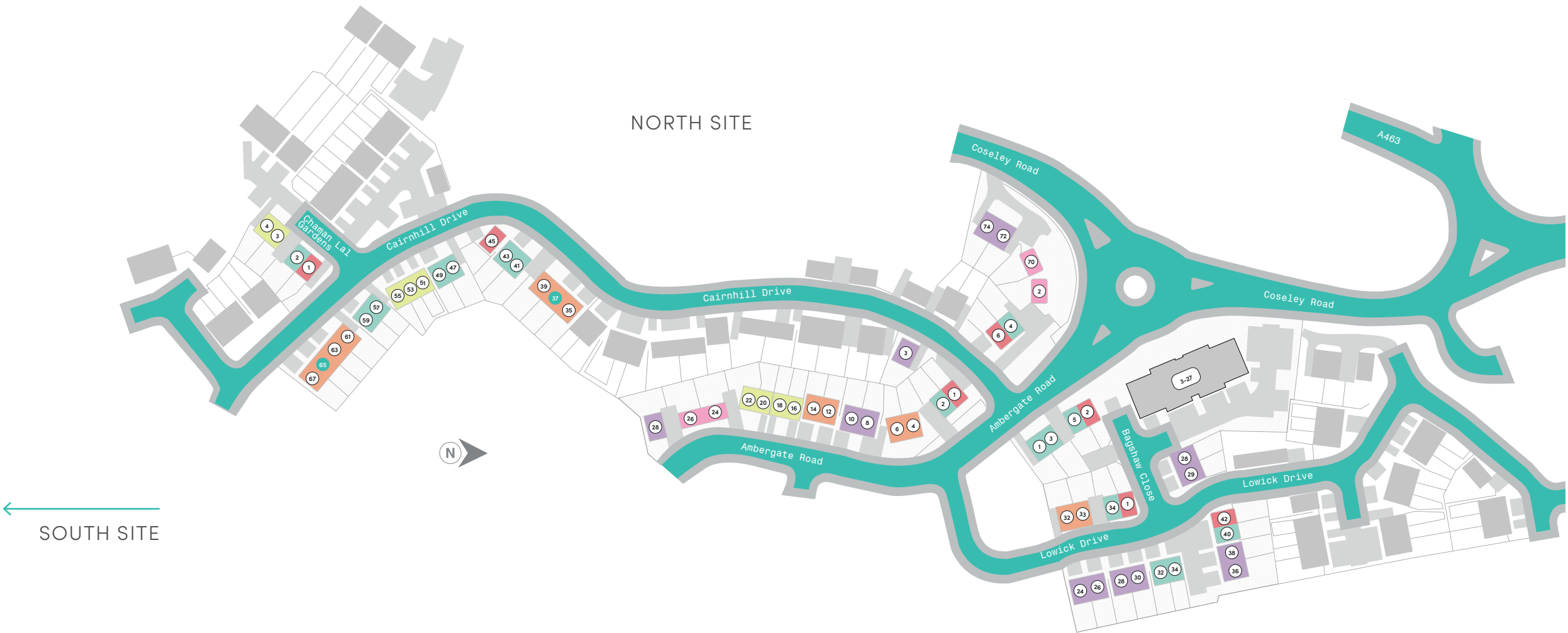
Visiting the site is straight forward using postcode WV14 0RT for Coseley Road.



## STONEFIELD EDGE LOCATION MAP



STONEFIELD EDGE SITE MAP



← SOUTH SITE

Stonefield Edge North

IRWELL	ELLESMERE
TRENT	WEAVER
GRANTHAM	DEE
APARTMENTS	
PROPERTIES THAT INCLUDE UNDERPASS	





EXCLUSIVELY FOR RENT



Images for demonstrational purposes only. Spec and decor may differ.

IRWELL 2 BEDROOM HOME

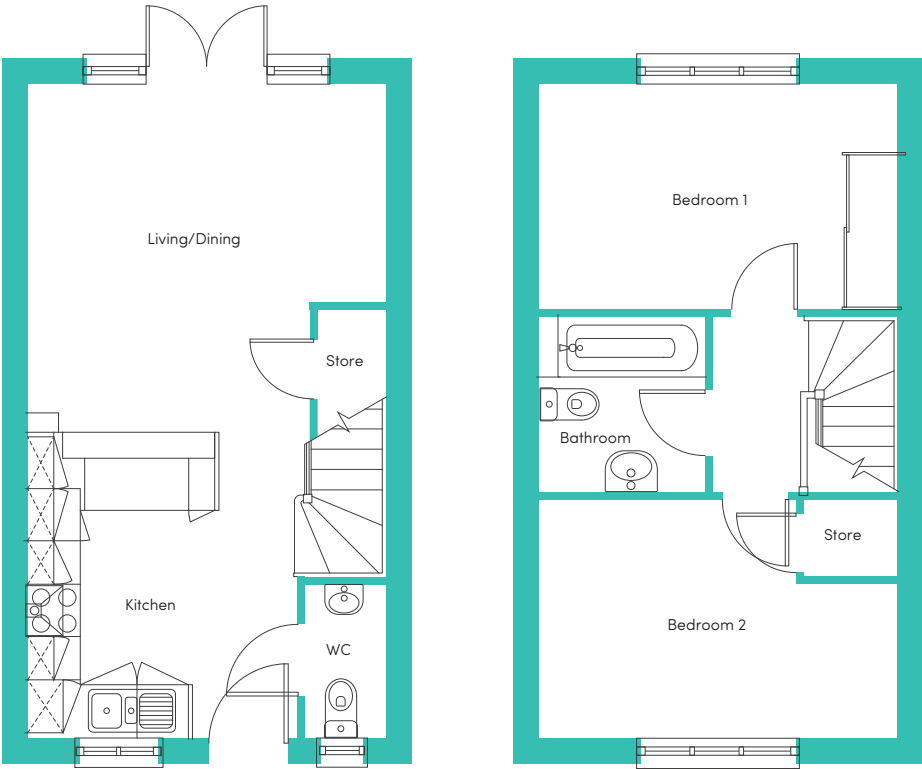
The Irwell is a stunning home built with you in mind.

Entering through the front door you are welcomed by an attractive kitchen with a range of contemporary fitted units and modern integrated appliances. Heading through the hallway will take you into a spacious living/dining area which is finished with beautiful wooden flooring and French windows which open out onto your private rear garden. The lower floor also benefits from a storage cupboard and WC.

Upstairs you will find two spacious double rooms, the main bedroom including a fitted, mirrored wardrobe, whilst the second bedroom benefits from having built in storage space. There is also a main bathroom equipped with a bath and shower.

THE PROPERTY INCLUDES:

- Parking space
- Security alarm system
- Fitted wardrobes to main bedroom
- Dishwasher
- Fridge freezer
- Washing/drying machine
- Oven and hob
- Light wash wood effect flooring
- Dark worktops
- Modern, white kitchen units
- Light wood or white interior doors
- Light grey carpets in the bedrooms and up the stairs
- Outside taps for watering the garden
- Patio area in the private back garden
- Electric car charging point ready



IRWELL 2 BEDROOM HOME

GROUND FLOOR

Kitchen  
3.10 x 3.66m (10'2" x 12'0")  
Living/Dining  
4.10 x 3.83m (13'6" x 12'7")†

FIRST FLOOR

Bedroom 1  
4.10 x 2.60m (13'6" x 8'6")  
Bedroom 2  
4.10 x 2.73m (13'6" x 9'0")†  
Bathroom  
1.92 x 2.02m (6'4" x 6'8")

These measurements may vary slightly by plot. The external elevations, architectural detailing and floor plans of individual house types may vary from those illustrated. All room sizes are approximate with maximum dimensions. While every effort has been made to ensure that the information contained in this leaflet is correct, it is designed specifically as a guide and we reserve the right to amend the specifications as necessary and without notice. These particulars do not wholly or in part constitute a contract or agreement and are for general guidance only. Images are indicative only. † Denotes longest measurement taken.



EXCLUSIVELY FOR RENT



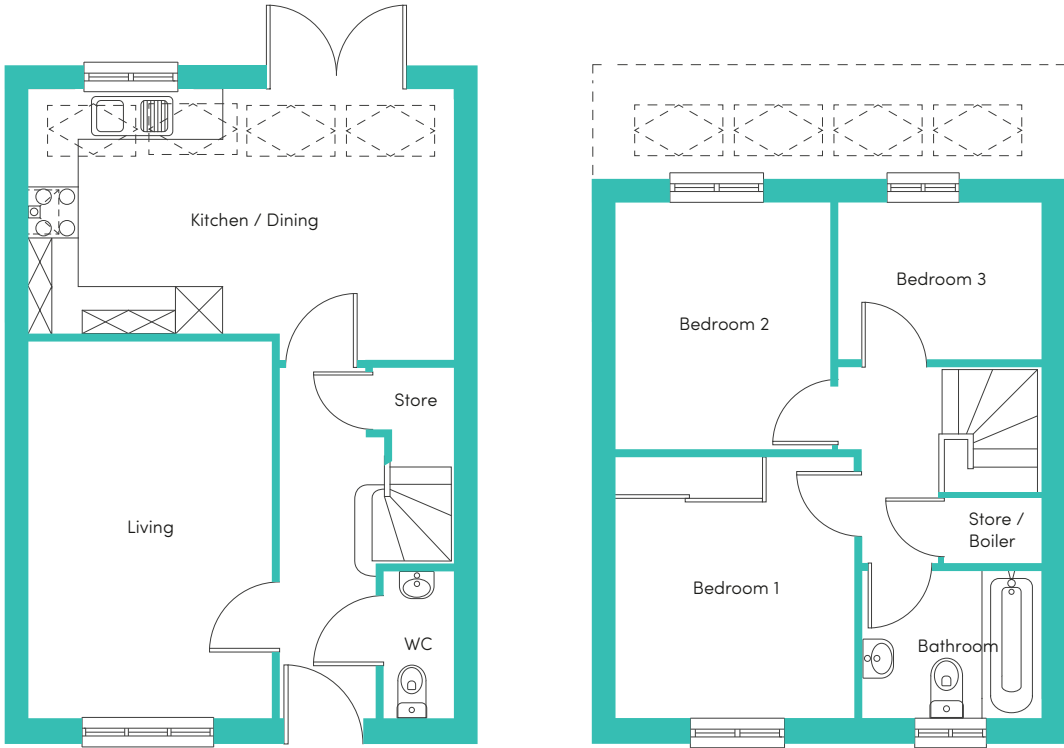
Images for demonstrational purposes only. Spec and decor may differ.

ELLESMERE 3 BEDROOM HOME

The Ellesmere is a stunning home built with your needs in mind. Downstairs, there is a generous living room, hallway and WC. The rear of the property has a magnificent living/kitchen area with a range of contemporary fitted units with integrated appliances. The room has French windows opening onto and overlooking the rear garden as well as a series of skylights which flood the room with light – an ideal space for both family time and entertaining.

Upstairs there is a spacious family bathroom complete with a bath and shower, the main bedroom is with fitted, mirrored wardrobes and two further well-proportioned bedrooms. At the top of the stairs you will also find a handy store cupboard.

- THE PROPERTY INCLUDES:
- Parking space
  - Security alarm system
  - Fitted wardrobes to main bedroom
  - Dishwasher
  - Fridge freezer
  - Washing/drying machine
  - Oven and hob
  - Light wash wood effect flooring
  - Dark worktops
  - Modern, white kitchen units
  - Light wood or white interior doors
  - Light grey carpets in the bedrooms and stairs
  - Outside taps for watering the garden
  - Patio area in the private back garden
  - Electric car charging point ready



ELLESMERE 3 BEDROOM HOME

GROUND FLOOR

Kitchen/Dining  
5.42 x 3.45m (17'10" x 11'4")†  
Living  
3.09 x 4.83m (10'2" x 15'11")

FIRST FLOOR

Bedroom 1  
3.04 x 3.36m (10'0" x 11'0")  
Bedroom 2  
2.74 x 3.16m (9'0" x 10'5")  
Bedroom 3  
2.61 x 2.00m (8'7" x 6'7")  
Bathroom  
2.31 x 1.92m (7'7" x 6'4")

These measurements may vary slightly by plot. The external elevations, architectural detailing and floor plans of individual house types may vary from those illustrated. All room sizes are approximate with maximum dimensions. While every effort has been made to ensure that the information contained in this leaflet is correct, it is designed specifically as a guide and we reserve the right to amend the specifications as necessary and without notice. These particulars do not wholly or in part constitute a contract or agreement and are for general guidance only. † Denotes longest measurement taken.



EXCLUSIVELY FOR RENT



Images for demonstrational purposes only. Spec and decor may differ.

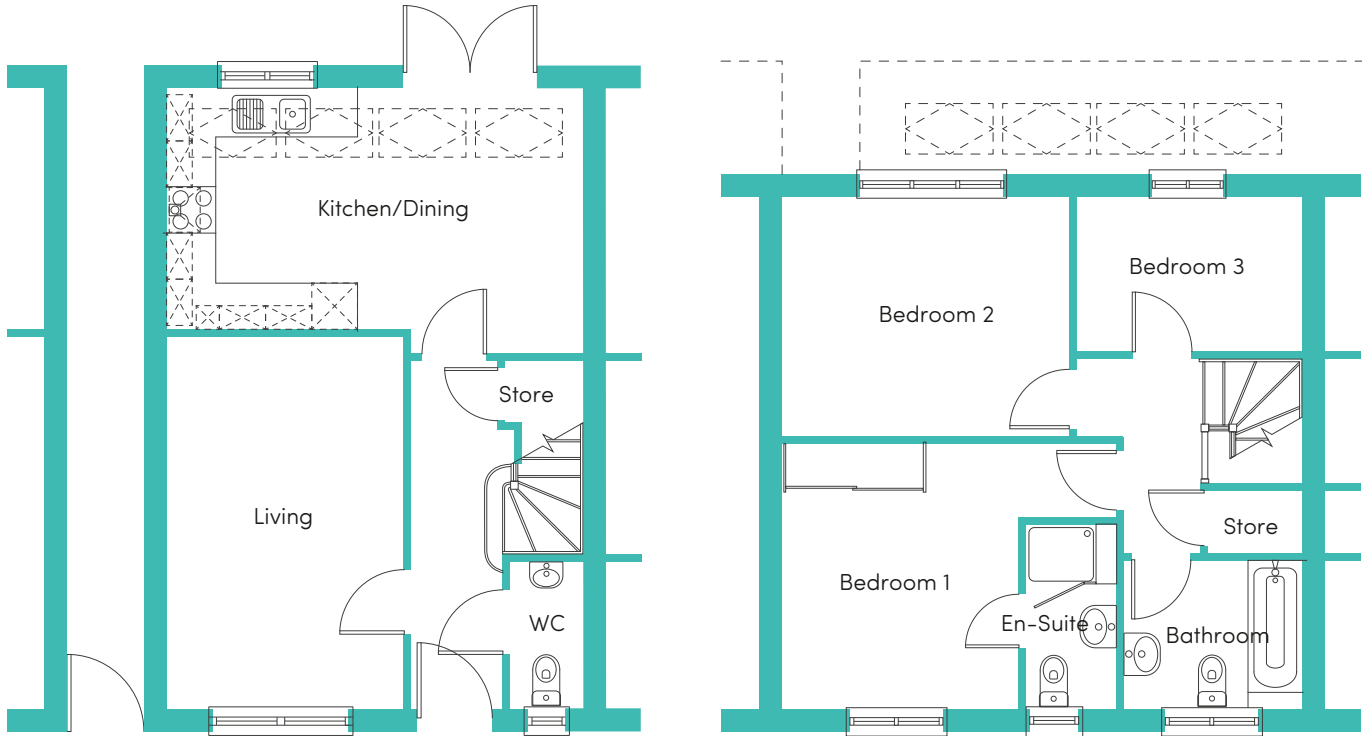
ELLESMERE UP 3 BEDROOM HOME

The Ellesmere UP is a stunning home built with your needs in mind. Downstairs there is a generous living room, hallway and WC. The rear of the property has a magnificent living/kitchen area with a range of contemporary fitted units with integrated appliances. The room has French windows opening onto and overlooking the rear garden as well as a series of skylights which flood the room with light – an ideal space for both family time and entertaining.

Unlike the regular Ellesmere, the Ellesmere UP includes an underpass, which means that there is a little more space upstairs. The first floor has a spacious family bathroom complete with both bath and shower, a main bedroom suite with shower room and fitted, mirrored wardrobes. You will also find two further well-proportioned bedrooms and a handy boiler/store cupboard just off the hallway.

THE PROPERTY INCLUDES:

- Parking space
- Security alarm system
- Fitted wardrobes to main bedroom
- Dishwasher
- Fridge freezer
- Washing/drying machine
- Oven and hob
- Light wash wood effect flooring
- Dark worktops
- Modern, white kitchen units
- Light wood or white interior doors
- Light grey carpets in the bedrooms and stairs
- Outside taps for watering the garden
- Patio area in the private back garden



ELLESMERE UP 3 BEDROOM HOME

GROUND FLOOR

Kitchen/Dining  
5.42 x 3.45m (17'10" x 11'4")†  
Living  
3.09 x 4.83m (10'2" x 15'11")

FIRST FLOOR

Bedroom 1  
3.07 x 3.42m (10'1" x 11'3")  
Bedroom 2  
3.76 x 3.09m (12'4" x 10'2")  
Bedroom 3  
2.94 x 2.00m (9'8" x 6'7")  
Bathroom  
2.33 x 1.92m (7'8" x 6'4")

These measurements may vary slightly by plot. The external elevations, architectural detailing and floor plans of individual house types may vary from those illustrated. All room sizes are approximate with maximum dimensions. While every effort has been made to ensure that the information contained in this leaflet is correct, it is designed specifically as a guide and we reserve the right to amend the specifications as necessary and without notice. These particulars do not wholly or in part constitute a contract or agreement and are for general guidance only. † Denotes longest measurement taken.



EXCLUSIVELY FOR RENT



Images for demonstrational purposes only. Spec and decor may differ.

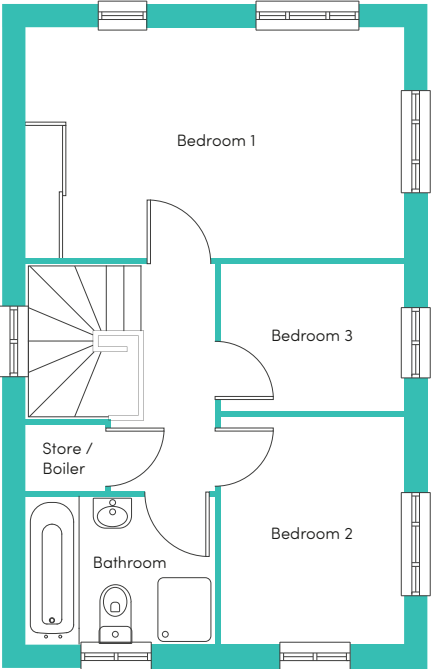
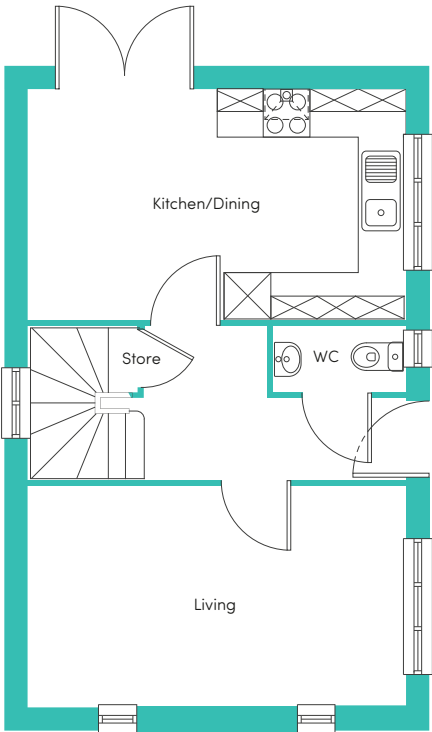
GRANTHAM 3 BEDROOM HOME

The welcoming central hallway of the Grantham sits in between the living room and the kitchen. A house designed with you in mind, the spacious lounge provides the perfect area to relax, whilst the dining/kitchen area provides a great place to spend time and entertain with its French windows opening on to the garden. A WC is conveniently situated off the hallway, completing the downstairs.

Upstairs, the house has a large main bedroom with fitted, mirrored wardrobes, and a further two bedrooms. A stylish family bathroom with a separate bath and shower provides the best of both worlds, whilst a store room on the landing provides a space to store bits and pieces.

- THE PROPERTY INCLUDES:
- Parking space
  - Security alarm system
  - Fitted wardrobes to main bedroom
  - Dishwasher
  - Fridge freezer
  - Washing/drying machine
  - Oven and hob
  - Light wash wood effect flooring

- Dark worktops
  - Modern, white kitchen units
  - Light wood or white interior doors
  - Light grey carpets in the bedrooms and stairs
  - Outside taps for watering the garden
  - Patio area in the private back garden
  - Electric car charging point ready



GRANTHAM 3 BEDROOM HOME

GROUND FLOOR

Kitchen/Dining  
4.92 x 2.98m (16'2" x 9'10")

Living  
4.92 x 2.88m (16'2" x 9'6")

FIRST FLOOR

Bedroom 1  
4.92 x 2.98m (16'2" x 9'9")

Bedroom 2  
2.40 x 3.02m (7'10" x 9'11")

Bedroom 3  
2.40 x 1.90m (7'10" x 6'3")

Bathroom  
2.46 x 1.98m (8'1" x 6'6")

These measurements may vary slightly by plot. The external elevations, architectural detailing and floor plans of individual house types may vary from those illustrated. All room sizes are approximate with maximum dimensions. While every effort has been made to ensure that the information contained in this leaflet is correct, it is designed specifically as a guide and we reserve the right to amend the specifications as necessary and without notice. These particulars do not wholly or in part constitute a contract or agreement and are for general guidance only. Images are indicative only. † Denotes longest measurement taken.



EXCLUSIVELY FOR RENT



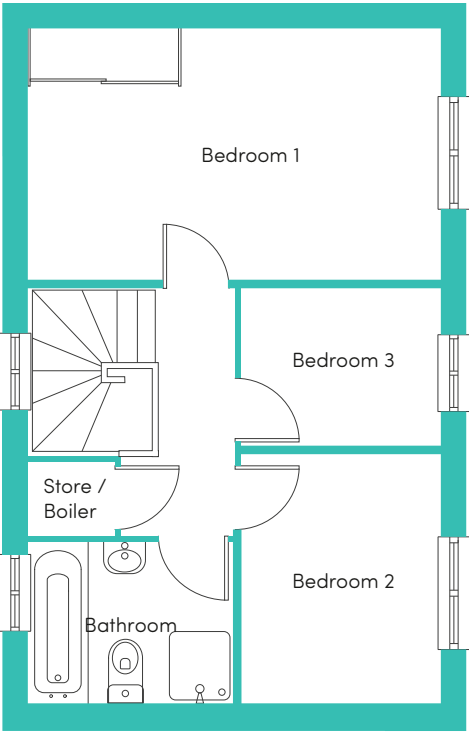
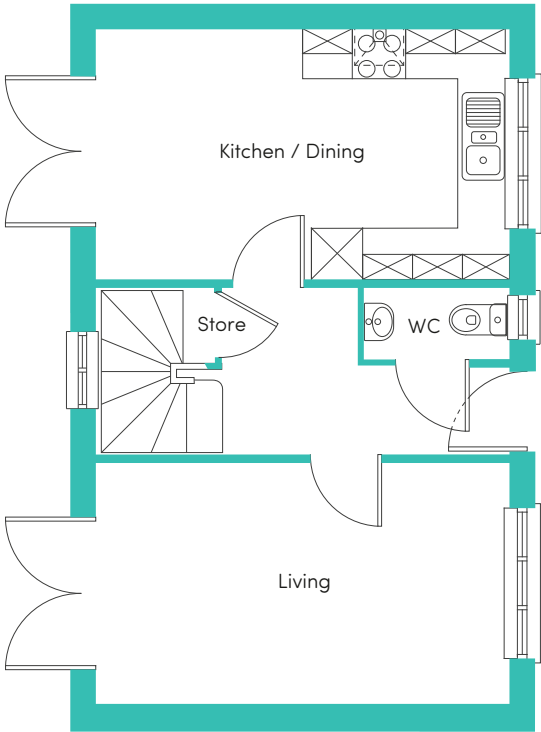
Images for demonstrational purposes only. Spec and decor may differ.

TRENT 3 BEDROOM HOME

The Trent is a well-proportioned double-fronted home. Upon walking through the door you will find a large living room to one side and a open plan kitchen/dining room to the other. Both of these spacious areas benefit from an abundance of natural light due to the French windows leading on to your own private garden. You will also find a handy WC downstairs.

Upstairs the main bedroom offers a lovely space to relax, spanning the side of the property. This master bedroom also comes with fitted, mirrored wardrobes. Along the hall you will find another double bedroom, single bedroom and full bathroom suite, with separate bath and shower, as well as a storage cupboard to keep everything neat and tidy. The Trent is the perfect home for growing families looking for a traditional home with a fantastic layout.

- THE PROPERTY INCLUDES:
- Parking space
  - Security alarm system
  - Fitted wardrobes to main bedroom
  - Dishwasher
  - Fridge freezer
  - Washing/drying machine
  - Oven and hob
  - Light wash wood effect flooring
  - Dark worktops
  - Modern, white kitchen units
  - Light wood or white interior doors
  - Light grey carpets in the bedrooms and up the stairs
  - Outside taps for watering the garden
  - Patio area in the private back garden



TRENT 3 BEDROOM HOME

GROUND FLOOR

Kitchen/Dining  
4.92 x 2.98m (16'2" x 9'10")

Living  
4.92 x 2.87m (16'2" x 9'5")

FIRST FLOOR

Bedroom 1  
4.92 x 2.98m (16'2" x 9'9")

Bedroom 2  
2.40 x 3.02m (7'10" x 9'11")

Bedroom 3  
2.40 x 1.90m (7'10" x 6'3")

Bathroom  
2.46 x 1.98m (8'1" x 6'6")

These measurements may vary slightly by plot. The external elevations, architectural detailing and floor plans of individual house types may vary from those illustrated. All room sizes are approximate with maximum dimensions. While every effort has been made to ensure that the information contained in this leaflet is correct, it is designed specifically as a guide and we reserve the right to amend the specifications as necessary and without notice. These particulars do not wholly or in part constitute a contract or agreement and are for general guidance only. Images are indicative only. † Denotes longest measurement taken.



EXCLUSIVELY FOR RENT



Images for demonstrational purposes only. Spec and decor may differ.

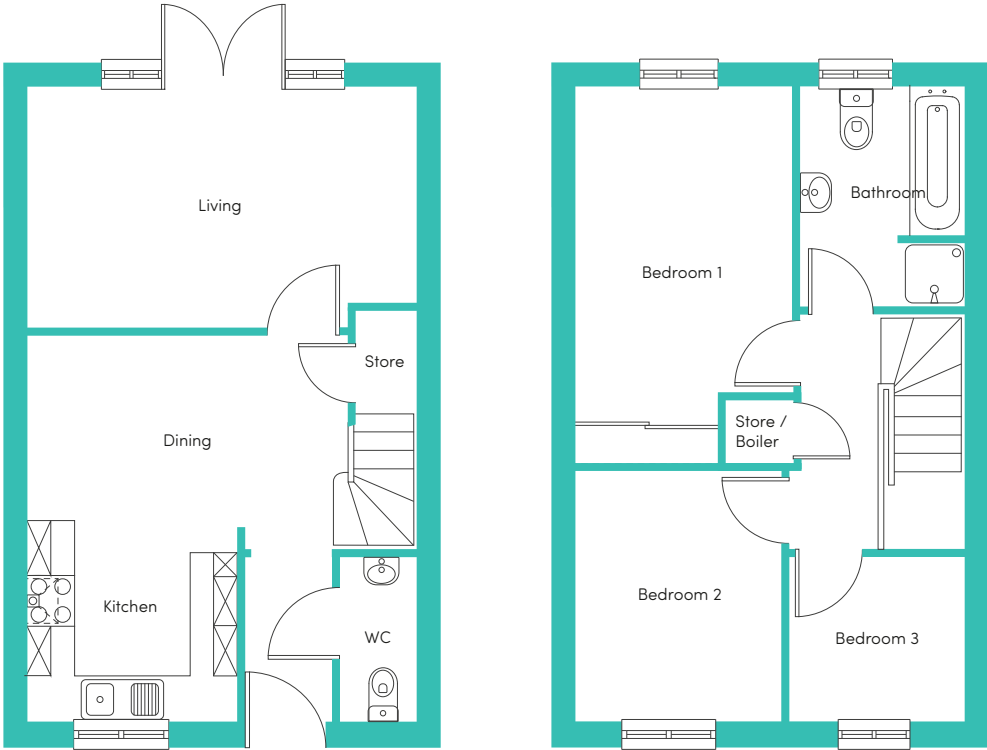
WEAVER 3 BEDROOM HOME

The Weaver is a beautifully designed, modern three bedroom family home. The downstairs offers an open plan kitchen/dining area with a range of contemporary fitted cabinets with integrated appliances. To the rear of the house the living room has a set of French windows which overlook and open onto the back garden, creating a light and spacious environment.

Upstairs there is a generously proportioned main bedroom with fitted, mirrored wardrobes. Additionally there are two further bedrooms to the front of the house as well as a family bathroom, offering great space for young couples and families alike.

- THE PROPERTY INCLUDES:
- Parking space
  - Security alarm system
  - Fitted wardrobes to main bedroom
  - Dishwasher
  - Fridge freezer
  - Washing/drying machine
  - Oven and hob
  - Light wash wood effect flooring

- Dark worktops
  - Modern, white kitchen units
  - Light wood or white interior doors
  - Light grey carpets in the bedrooms and stairs
  - Outside taps for watering the garden
  - Patio area in the private back garden
  - Electric car charging point ready



WEAVER 3 BEDROOM HOME

GROUND FLOOR

Kitchen/Dining  
4.04 x 4.89m (13'3" x 16'1")†  
  
Living  
4.92 x 3.08m (16'2" x 10'2")†

FIRST FLOOR

Bedroom 1  
2.80 x 4.79m (9'2" x 15'9")†

Bedroom 2  
2.64 x 3.19m (8'8" x 10'6")

Bedroom 3  
2.22 x 2.09m (7'3" x 6'10")

Bathroom  
2.05 x 2.82m (6'9" x 9'3")

These measurements may vary slightly by plot. The external elevations, architectural detailing and floor plans of individual house types may vary from those illustrated. All room sizes are approximate with maximum dimensions. While every effort has been made to ensure that the information contained in this leaflet is correct, it is designed specifically as a guide and we reserve the right to amend the specifications as necessary and without notice. These particulars do not wholly or in part constitute a contract or agreement and are for general guidance only. Images are indicative only. † Denotes longest measurement taken.



EXCLUSIVELY FOR RENT



Images for demonstrational purposes only. Spec and decor may differ.

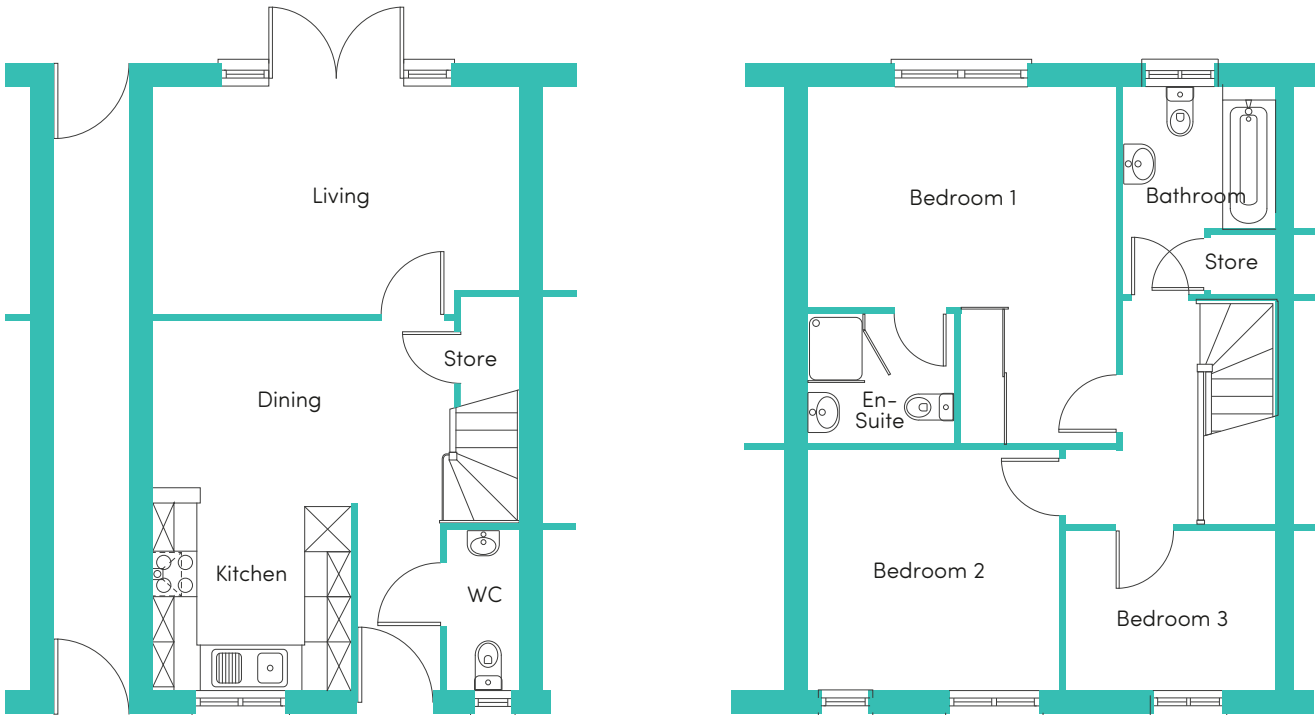
WEAVER UP 3 BEDROOM HOME

The Weaver UP is a beautifully designed, three bedroom family home. The downstairs offers an open plan kitchen/dining area with a range of contemporary fitted cabinets with integrated appliances. To the rear of the house the living room has a set of French windows which overlook and open onto the back garden, creating a light and spacious environment.

The Weaver UP includes an underpass, which means that there is a little extra space to the upstairs of the property, which features a large main bedroom with en-suite shower room, two further bedrooms to the front of the house, plus an additional family bathroom, offering the perfect space for young couples and families alike.

- THE PROPERTY INCLUDES:
- Parking space
  - Security alarm system
  - Fitted wardrobes to main bedroom
  - Dishwasher
  - Fridge freezer
  - Washing/drying machine
  - Oven and hob
  - Light wash wood effect flooring

- Dark worktops
  - Modern, white kitchen units
  - Light wood or white interior doors
  - Light grey carpets in the bedrooms and stairs
  - Outside taps for watering the garden
  - Patio area in the private back garden
  - Electric car charging point ready



WEAVER UP 3 BEDROOM HOME

GROUND FLOOR

Kitchen/Dining  
4.11 x 4.89m (13'6" x 16'1")†

Living  
5.01 x 3.09m (16'6" x 10'2")

FIRST FLOOR

Bedroom 1  
4.15 x 2.99m (13'8" x 9'10")

Bedroom 2  
3.99 x 3.19m (13'1" x 10'6")

Bedroom 3  
2.22 x 2.09m (7'3" x 6'10")

Bathroom  
2.05 x 2.82m (6'9" x 9'3")

These measurements may vary slightly by plot. The external elevations, architectural detailing and floor plans of individual house types may vary from those illustrated. All room sizes are approximate with maximum dimensions. While every effort has been made to ensure that the information contained in this leaflet is correct, it is designed specifically as a guide and we reserve the right to amend the specifications as necessary and without notice. These particulars do not wholly or in part constitute a contract or agreement and are for general guidance only. Images are indicative only. † Denotes longest measurement taken.



EXCLUSIVELY FOR RENT



Images for demonstrational purposes only. Spec and decor may differ.

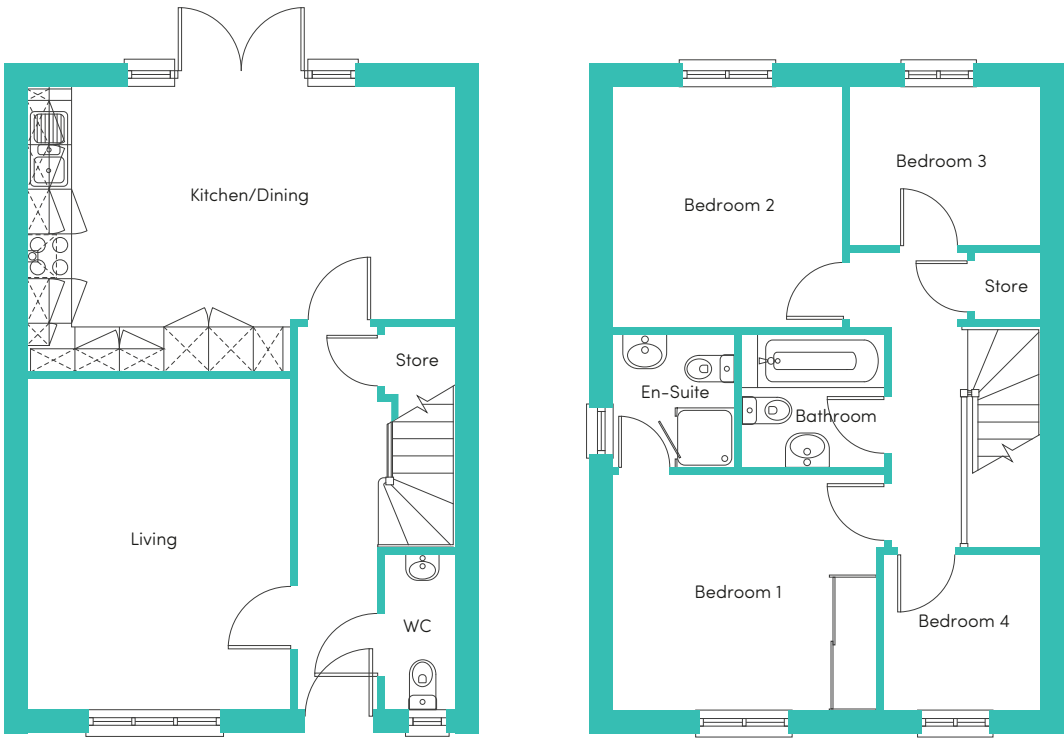
DEE 4 BEDROOM HOME

The Dee is a beautiful four bedroom modern home, built over two levels.

Downstairs there is a large living room, WC and hallway leading to the rear of the property where you will find a stunning kitchen/dining area equipped with integrated kitchen appliances and contemporary units. The kitchen/dining area also benefits from French windows which take you into your own private rear garden.

Upstairs you will find a family sized bathroom including a stylish white bathroom suite and four bedrooms – two doubles and two singles. The main bedroom benefits from built-in wardrobes and an en-suite bathroom fitted with its own shower and cubicle.

- THE PROPERTY INCLUDES:
- Parking space
  - Security alarm system
  - Fitted wardrobes to main bedroom
  - Dishwasher
  - Fridge freezer
  - Washing/drying machine
  - Oven and hob
  - Light wash wood effect flooring
  - Dark worktops
  - Modern, white kitchen units
  - Light wood or white interior doors
  - Light grey carpets in the bedrooms and up the stairs
  - Outside taps for watering the garden
  - Patio area in the private back garden
  - Electric car charging point ready



DEE 4 BEDROOM HOME

GROUND FLOOR

Kitchen/Dining  
5.91 x 3.85m (19'5" x 12'8")†

Living  
3.53 x 4.42m (11'7" x 14'6")

FIRST FLOOR

Bedroom 1  
3.21 x 3.15m (10'6" x 10'4")

Bedroom 2  
3.10 x 3.25m (10'2" x 10'8")

Bedroom 3  
2.73 x 2.14m (9'0" x 7'1")

Bedroom 4  
2.63 x 2.08m (8'8" x 6'10")

Bathroom  
1.82 x 1.93m (6'0" x 6'4")

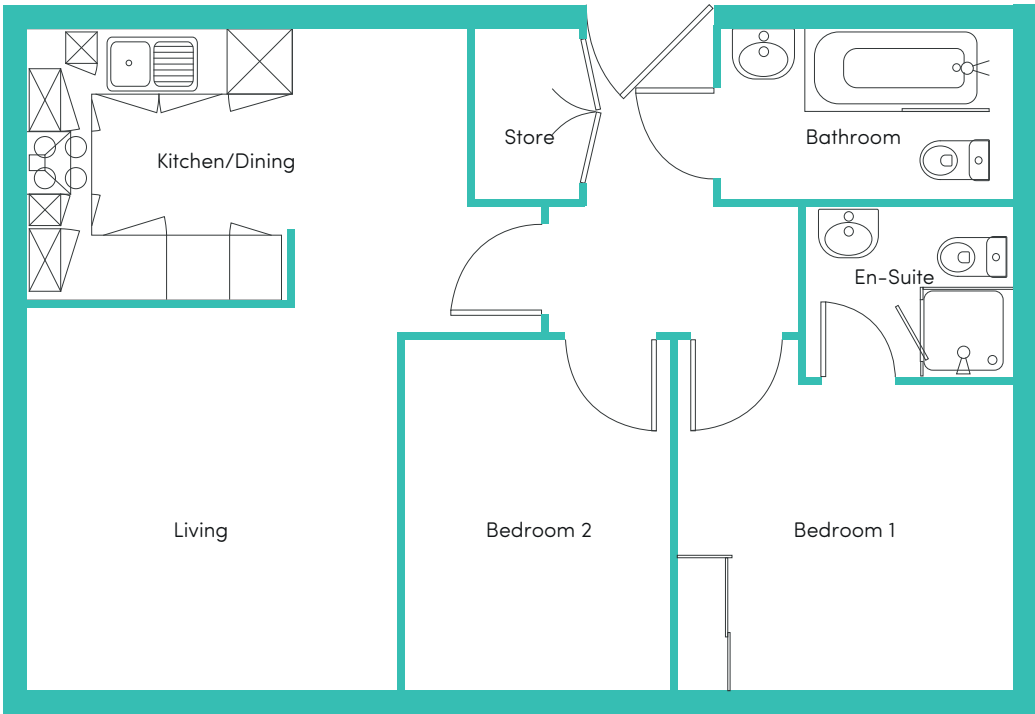
These measurements may vary slightly by plot. The external elevations, architectural detailing and floor plans of individual house types may vary from those illustrated. All room sizes are approximate with maximum dimensions. While every effort has been made to ensure that the information contained in this leaflet is correct, it is designed specifically as a guide and we reserve the right to amend the specifications as necessary and without notice. These particulars do not wholly or in part constitute a contract or agreement and are for general guidance only. Images are indicative only. † Denotes longest measurement taken.



EXCLUSIVELY FOR RENT



Images for demonstrational purposes only. Spec and decor may differ.



ROWAN 2 BEDROOM APARTMENT

This two double bedroom apartment has loads to offer! Its kitchen/ dining area creates the perfect space for mealtime whilst its separate spacious living room creates a lovely area to relax.

With one bedroom benefiting from an en-suite bathroom and an additional full bathroom suite and storage cupboard located in the hallway, this apartment will work perfectly for friends looking to live together but wanting a little extra space or young families looking for their first home.

With integrated kitchen appliances, including a washing machine, dishwasher and hob/oven, isn't it time for you to start living the Simple Life?

- THE PROPERTY INCLUDES:
- Allocated parking space
  - Fitted wardrobes to main bedroom
  - Dishwasher
  - Fridge freezer
  - Washing/drying machine
  - Oven and hob
  - Light wash wood effect flooring
  - Dark worktops
  - Modern, white kitchen units
  - Light wood or white interior doors
  - Light grey carpets in the bedrooms
  - White blinds in bedrooms
  - Full length grey curtains in living area

ROWAN 2 BEDROOM APARTMENT

Kitchen/Dining 4.12 x 2.58m (13'6" x 8'6")	Bedroom 1 3.12 x 2.86m (10'3" x 9'5")	Bathroom 2.72 x 1.64m (8'11" x 5'5")
Living 3.49 x 3.54m (11'6" x 11'8")	Bedroom 2 2.40 x 3.27m (7'10" x 10'9")	

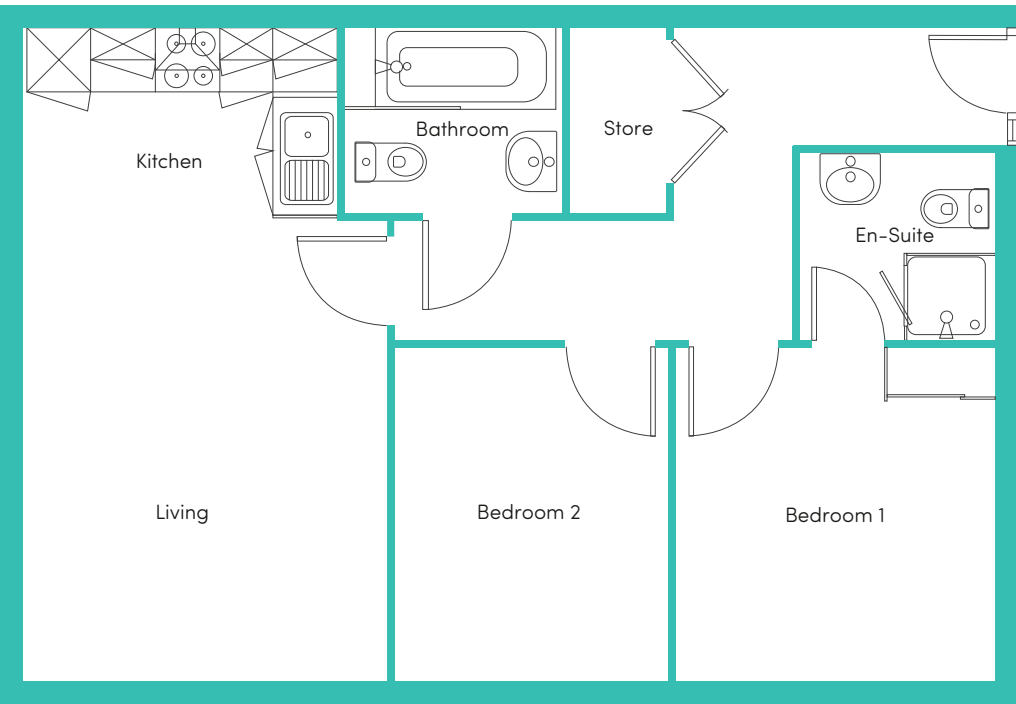
These measurements may vary slightly by plot. The external elevations, architectural detailing and floor plans of individual house types may vary from those illustrated. All room sizes are approximate with maximum dimensions. While every effort has been made to ensure that the information contained in this leaflet is correct, it is designed specifically as a guide and we reserve the right to amend the specifications as necessary and without notice. These particulars do not wholly or in part constitute a contract or agreement and are for general guidance only. Images are indicative only. † Denotes longest measurement taken.



EXCLUSIVELY FOR RENT



Images for demonstrational purposes only. Spec and decor may differ.



ALDER 2 BEDROOM APARTMENT

The two double bedroom Alder is a spacious apartment perfect for city living.

With an open plan kitchen/diner attached to a light and airy living room, it is the perfect space for entertaining guests.

Benefiting from two bathrooms – one en-suite and another full bathroom suite – the apartment is great for friends sharing or couples who enjoy having a little extra room.

Complete with integrated kitchen appliances, including a washing machine, dishwasher and hob/oven, isn't it time for you to start living the Simple Life?

- THE PROPERTY INCLUDES:
- Allocated parking space
  - Fitted wardrobes to main bedroom
  - Dishwasher
  - Fridge freezer
  - Washing/drying machine
  - Oven and hob
  - Light wash wood effect flooring
  - Dark worktops
  - Modern, white kitchen units
  - Light wood or white interior doors
  - Light grey carpets in the bedrooms
  - White blinds in bedrooms
  - Full length grey curtains in living area

ALDER 2 BEDROOM APARTMENT

Kitchen	Bedroom 1	Bathroom
3.04 x 1.80m (10'0" x 5'11")	3.01 x 3.14m (9'11" x 10'4")	1.96 x 1.80m (6'5" x 5'11")
Living	Bedroom 2	
3.46 x 4.39m (11'5" x 14'5")	2.53 x 3.14m (8'4" x 10'4")	

These measurements may vary slightly by plot. The external elevations, architectural detailing and floor plans of individual house types may vary from those illustrated. All room sizes are approximate with maximum dimensions. While every effort has been made to ensure that the information contained in this leaflet is correct, it is designed specifically as a guide and we reserve the right to amend the specifications as necessary and without notice. These particulars do not wholly or in part constitute a contract or agreement and are for general guidance only. Images are indicative only. † Denotes longest measurement taken.



TESTIMONIALS

“

"I would recommend Simple Life to anyone. They are honestly a very caring landlord, you are a person to them, which is great and not what you get from a lot of landlords."

Charlie Say,  
Simple Life customer

"It's a really satisfying feeling knowing Simple Life is looking after our needs and we don't have to worry. If we need to contact them they're always polite and understanding, listening to our concerns. As soon as we saw our house, we fell in love with it, we knew we had to have one."

Kelly Wood,  
Simple Life customer

”



OUR FEES

Permitted Payments under a Simple Life Assured Shorthold

In addition to your Rent, you may be expected to pay any or all of the below before, during, and after your tenancy in line with your Assured Shorthold Tenancy agreement and government legislation:

Criteria for Application			
All applications are based on minimum household affordability of 30 x the monthly rent payment. If the applicant has historic or current credit issues such as CCJ's, IVA's, Bankruptcy then these must be disclosed to the letting agent before a holding deposit is paid so they can establish whether you are likely to be accepted for tenancy.			
All applicants are referenced through Let Alliance against a criteria agreed with the Landlord and will include proof of identification, proof of residence, credit check, Right to Rent check and proof of income, passing a reference does not constitute acceptance for tenancy and the Landlord can decline an applicant without reason. All offers to tenancy are made Subject to Contract.			

Fee Type	Details	Date Payable	Amount
Refundable Holding Deposit	A holding deposit will be required in order to secure the property.  By paying this holding deposit you give your consent for this said holding deposit to be held on account until your first month's rent becomes due. (Typically within 90 days). The holding deposit will paid towards your first month's rent.	The holding deposit will be collected by Simple Life as soon as you have completed the referencing application form at which point the property will be removed from the market	Equivalent to one week's rent rounded down to the nearest £10. e.g if your rent is £750 pcm then the holding deposit will be £170.
Simple Life may retain may retain a proportion of your holding deposit if: · You provide misleading information on your application form · You fail a Right to Rent Check · You change your mind about the property and withdraw your application · You have failed to take reasonable steps to enter into the tenancy  The following amounts will be deducted from your holding deposit should your application not progress to the next stage: · £50.00+VAT per property · £25.00+VAT per applicant and/or guarantor You will be refunded the remaining amount of your holding deposit once the above costs have been deducted.			
Refundable Tenancy Deposit	This is your Security Deposit. Your Deposit will be registered with the Deposit Protection Service for the duration of your tenancy.	The Simple Life Team will contact you to advise when all payments are required.	Equivalent to 5 week's rent.
First Month's Rent	Your first month's rent is due in advance.	The Simple Life Team will contact you to advise when all payments are required.	1 month's rent (less any holding deposit that has been collected).

Residents may also be charged the following fees for services provided during the tenancy:

Fee Type	Details	Date Payable	Amount
Default Fee	A payment that is required in the event of a default by the resident: • Lost key • Lost security device giving access to the housing.	The holding deposit will be collected by Simple Life as soon as you have completed the referencing application form at which point the property will be removed from the market	Equivalent to one week's rent rounded down to the nearest £10. e.g if your rent is £750 pcm then the holding deposit will be £170.
Late Payment Fee	Fee will be added to the resident's account when rent falls overdue (by 14 days or more).	The Simple Life Team will contact you to advise when all payments are required.	Equivalent to 5 week's rent.
Variation of Tenancy Fee	Payments on assignment, variation or novation of a tenancy at the resident's request.	The Simple Life Team will contact you to advise when all payments are required.	1 month's rent (less any holding deposit that has been collected).
Early Termination Fee	Payments in respect of early termination of a tenancy agreement at the resident's request.	Payable on request by the Simple Life Team following the resident request.	Capped at Simple Life's loss of rent.

Any payment is inclusive of VAT. Unless stated otherwise, all payments are non-refundable.  
Residents may be expected to pay additional amounts for services incurred during your tenancy such as: Council Tax, Energy and Utilities, Television Licences, Phone and Internet services.  
These are not included with your rent or payments to Simple Life. It is the responsibility of the resident to arrange for payment for these services where applicable.

Accurate as of May 2021



# COMMUNITIES

A house is not just a home, but also where you put down roots and establish yourself in a community of neighbours and friends. At Simple Life we feel it is just as important to have a sense of place within your street as it is to enjoy your internal space. As such, we help to organise community events throughout the year across our developments, bringing the neighbourhood together.

From Easter Egg Hunts to funding support for local schools, Simple Life aims to enhance and expand engagement projects and establish each new development as a hub for residents to **Settle for More**.

## ABOUT US

Simple Life customers are offered the remarkable opportunity to rent a brand new quality home from a professional and reliable landlord. We take pride in our homes and the communities we create, so we ensure that your home is kept in excellent working order and to high standards throughout the duration of your tenancy.

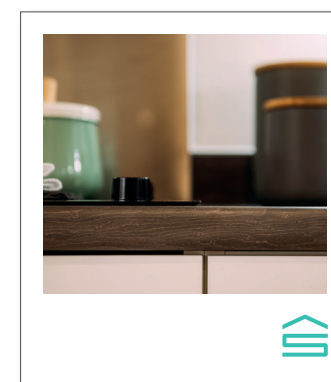
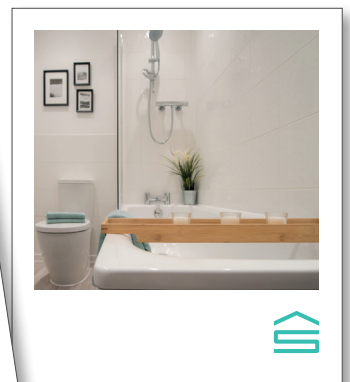
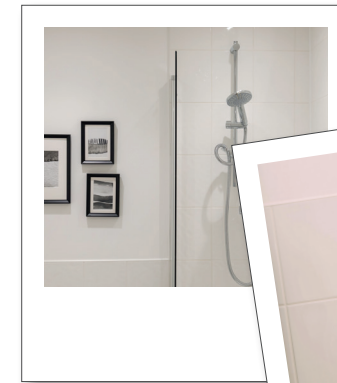
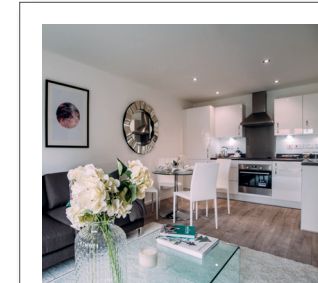
When it comes to quality affordable rental properties, we recognise that many private landlords may struggle to offer the level of service that you deserve as a customer, and we want to change that!

From cleverly integrated appliances to cosy carpets, we've thought of every little detail in your Simple Life home. And because our neighbourhoods are designed to add character and complement their surroundings perfectly, we build properties in both render and brick to create a harmonious mix – so your home will be as individual as you are.

Being part of the Simple Life family means you'll soon be living in the heart of a friendly and like-minded community, with everything you need right on your doorstep. So you'll find handy transport links nearby, and great schools, shops and amenities just minutes away.

With over 3000 properties now built across the UK, Simple Life will make you feel right at home, wherever that may be.

## OUR SPEC







**E:** [lettings@simplelifelifehomes.co.uk](mailto:lettings@simplelifelifehomes.co.uk)

**T:** 0345 686 0735

[www.simplelifelifehomes.co.uk](http://www.simplelifelifehomes.co.uk)